

TEA CUP PIPE CARRIER (TC)

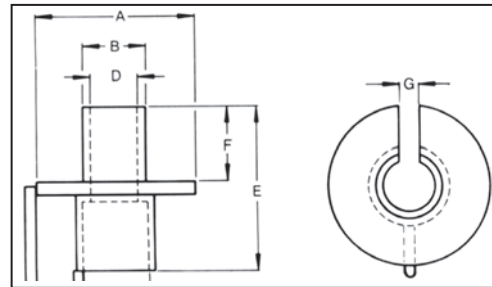


Model TC66



Features

- Efficiently handles concrete water and sewer pipes.
- Three sizes available to lift up to 18 tons.
- Standard hand grip for ease of installation.
- Optional spoon handle (for model TC66 only) to assist Tea Cup placement in small diameter pipes.



Rated Capacity (tons)	Part Number	Dimensions (in.)							Weight (lbs.)
		A	B	C	D	E	F	G	
6.6	TC66**	5.56	2.00	2.13	1.13	4.75	1.75	1.13	9
13	TC130	6.00	2.50	2.63	1.38	5.75	1.75	1.38	12
18	TC180	8.00	3.00	3.25	1.63	7.75	2.75	1.63	22

Tea Cup Sling (TCS)

For use with Tea Cup Carriers
5-ft. standard length



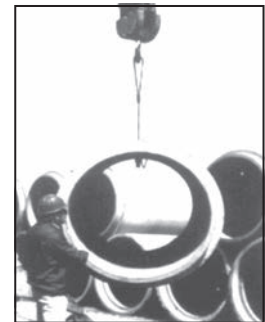
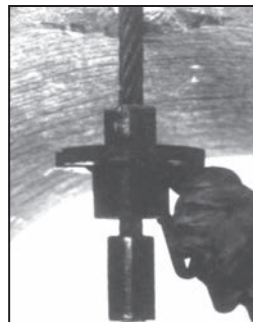
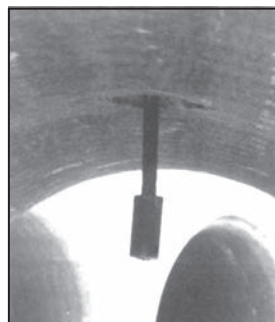
**Tea Cup Spoon Handle (TCSH)

- Use with model TC66 only.
- Includes bolt-on lip.
- Length: 61.1"

Rated Capacity (tons)	Part Number	Sling Diameter (in.)	For Use With	Weight (lbs.)
4.9	TCS34	3/4	TC66	9
6.6	TCS78	7/8		14
8.5	TCS1	1	TC130	19
10	TCS118	1-1/8		26
13	TCS114	1-1/4		33
18	TCS112	1-1/2	TC180	52

OPERATION

1. Drop Tea Cup Sling through hole in pipe.
2. Align and insert Tea Cup Pipe Carrier onto sling.
3. Lift pipe.



PIPE PICK (PP)

For concrete pipe only

Rated Capacity (lbs.)	Part Number	Minimum Pipe ID (in.)	Dimensions (in.)								Weight (lbs.)
			A	B	C	T	D	E	F	G	
3,000	CPP1.5	12	0.62	1.62	2.37	0.62	1.50	23.00	10.50	16.25	10
6,000	CPP3	14	0.75	1.93	2.93	0.75	1.75	27.62	12.00	20.00	18
10,000	CPP5	16	1.00	2.75	3.00	1.00	2.25	43.50	13.00	36.00	38



Features

- Simple and fast.
- No need to reach inside the pipe.
- Worker remains above the pipe at all times.
- Use to easily join length of pipe.

