



MODEL VL & VLC

Horizontal to Vertical - 180° rotation

- Turn a single steel plate from horizontal to vertical to horizontal through a 180° arc.
- Lock open / lock closed feature facilitates loading and unloading clamp while it protects grippers from damage and closes on material for a more secure lift.
- Working parts remain inside the body when the clamp is locked closed or locked open.
- Model VLC offers the same features as model VL except it locks closed only.



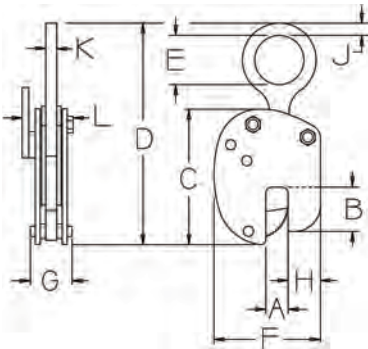
1/2 - 1 Ton VL



2 - 20 Ton VL



Model VLC



MODEL VL & VLC													
Vertical Capacity (tons)	Part Number	A (in.)	B (in.)	C (in.)	Max Height D (in.)	E (in.)	F (in.)	G (in.)	H (in.)	J (in.)	K (in.)	L (in.)	Weight (lbs.)
1/2	VL-0.5-A	0 - 7/8	2-3/4	7	11-1/2	2-1/4	5-5/8	2-1/2	1-3/4	1/2	1/2	3	9
1	VL-1.0-A	0 - 7/8	2-3/4	7	11-1/2	2-1/4	5-5/8	2-1/2	1-3/4	1/2	1/2	3	10
2	VL-2.0-A	0 - 1-5/8	4-1/8	9-1/8	15-1/4	3	8-3/8	3-3/8	2-1/2	3/4	5/8	4	22
3	VL-3.0-A	0 - 1-5/8	4-1/8	9-1/8	15-1/4	3	8-3/8	3-3/8	2-1/2	3/4	5/8	4	24
1/2	VLC-0.5-A	0 - 7/8	2-3/4	7	11-1/2	2-1/4	5-5/8	2-1/2	1-3/4	1/2	1/2	3	9
1	VLC-1.0-A	0 - 7/8	2-3/4	7	11-1/2	2-1/4	5-5/8	2-1/2	1-3/4	1/2	1/2	3	10
2	VLC-2.0-A	0 - 1-5/8	4-1/8	9-1/8	15-1/4	3	8-3/8	3-3/8	2-1/2	3/4	5/8	4	22
3	VLC-3.0-A	0 - 1-5/8	4-1/8	9-1/8	15-1/4	3	8-3/8	3-3/8	2-1/2	3/4	5/8	4	24

MODEL VL-U & VLC-U

Allows for Side Loading of the Lifting Shackle - 90°

- Both models rated lift capacity lowers as the angle of the pull increases (refer to Figure A).
- VL-U and VLC-U offer the same features as model VL except it locks closed only.
- Clamp requires operator to manually hold in "open" position when loading and unloading and locks closed onto material for a more secure lift.



Model VL-U



Model VLC-U

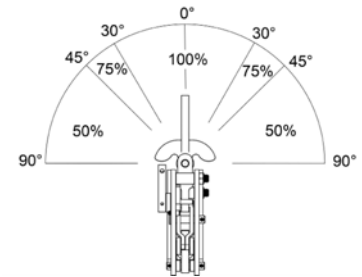
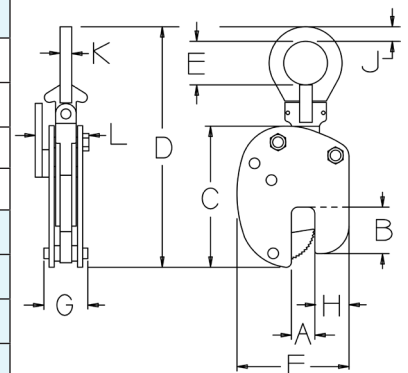
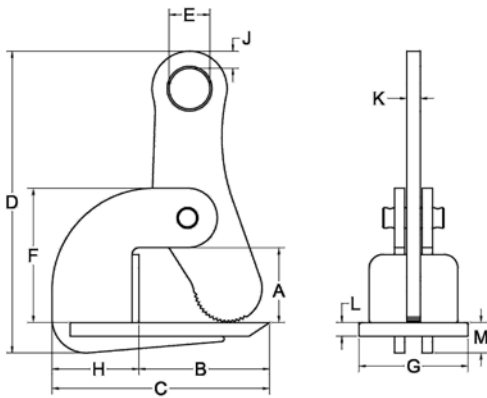


Figure A

MODEL VL-U & VLC-U													
Vertical Capacity (tons)	Part Number	A (in.)	B (in.)	C (in.)	Max Height D (in.)	E (in.)	F (in.)	G (in.)	H (in.)	J (in.)	K (in.)	L (in.)	Weight (lbs.)
1/2	VL-U-0.5-A	0 - 7/8	2-3/4	7	13	2-1/4	5-5/8	2-1/2	1-3/4	1/2	1/2	3	11
1	VL-U-1.0A	0 - 7/8	2-3/4	7	13	2-1/4	5-5/8	2-1/2	1-3/4	1/2	1/2	3	12
2	VL-U-2.0-A	0 - 1-5/8	4-1/8	9-1/8	17-3/8	3	8-3/8	3-3/8	2-1/2	3/4	5/8	4	26
3	VL-U-3.0-A	0 - 1-5/8	4-1/8	9-1/8	17-3/8	3	8-3/8	3-3/8	2-1/2	3/4	5/8	4	28
1/2	VLC-U-0.5-A	0 - 7/8	2-3/4	7	13	2-1/4	5-5/8	2-1/2	1-3/4	1/2	1/2	3	11
1	VLC-U-1.0A	0 - 7/8	2-3/4	7	13	2-1/4	5-5/8	2-1/2	1-3/4	1/2	1/2	3	12
2	VLC-U-2.0-A	0 - 1-5/8	4-1/8	9-1/8	17-3/8	3	8-3/8	3-3/8	2-1/2	3/4	5/8	4	26
3	VLC-U-3.0-A	0 - 1-5/8	4-1/8	9-1/8	17-3/8	3	8-3/8	3-3/8	2-1/2	3/4	5/8	4	28





MODEL HL Horizontal

- Use in pairs, or tripod arrangement to lift and transfer plates in a horizontal position only.
- Serrated gripping cams.
- Available with smooth non-marring cams.

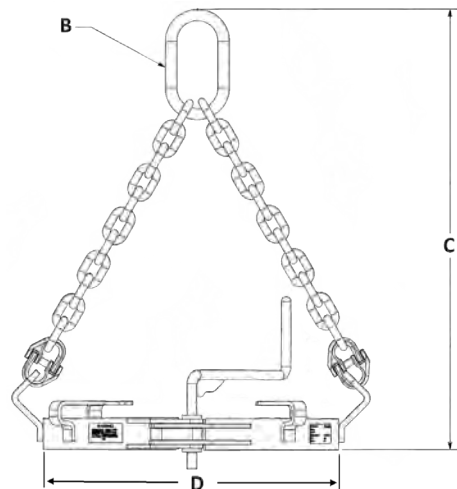


Vertical Capacity (tons)	Part Number	Plate Thickness A (in.)	B (in.)	C (in.)	Max Height D (in.)	E (in.)	F (in.)	G (in.)	H (in.)	J (in.)	K (in.)	L (in.)	M (in.)	Weight (lbs. per pair)
1/2	HL-0.5-A	0 - 1	4	6-1/8	6-1/2	1-1/4	2-5/8	3	2-1/8	1/2	1/2	3/8	7/8	10
1	HL-1.0-A	0 - 2-1/2	5	8	11	1-1/2	5	4	3	5/8	1/2	1/2	1-1/8	25
2	HL-2.0-A	0 - 2-1/2	5	8	11	1-1/2	5	4	3	5/8	5/8	1/2	1-1/8	28
3	HL-3.0-A	0 - 2-1/2	5	8-5/16	11-1/2	1-1/2	5	5	3-5/16	5/8	3/4	3/4	1-1/2	40
6	HL-6.0-A	0 - 2-1/2	5	8-5/16	11-1/2	1-1/2	5	5	3-5/16	5/8	3/4	3/4	1-1/2	43
8	HL-8.0-A	0 - 3	6-1/2	10-7/8	15	1-3/4	6-5/8	6	4-3/8	1-1/8	1	1	2	97

MODEL 300-S DRUM LIFTER Vertical only

- Secure locking device.
- Easy handling of one drum.
- Vertical lift and transport.

Vertical Capacity (tons)	Part Number	Drum Diameter	Lifting Eye B	Max Height C	Max Width D	Weight	Clamp Orientation
3000	300S-01.50-A	22.50	3 X 6	25	22.50	25	Vertical only



- General Information
- Web Slings
- Round Slings
- Slings Protection
- Wire Rope
- Chain Slings
- Rigging Hardware
- Mesh Slings
- Load Huggers
- Tow Products
- Lift-All Hoists
- Hoist Rings
- Plate Clamps
- Lifting Devices