

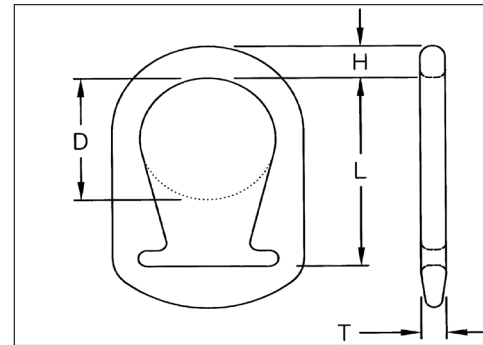
UNILINK™ SLING HARDWARE

Unilink Web Sling Hardware

Unilinks are a forged, high carbon steel fitting that function as both a triangle and choker.

Features and Benefits

- Forged steel for strength and reliability.
- Smooth rounded profile helps protect sling, worker, and load.
- Can be re-webbed to reduce cost.
- Powder-coated finish for longer life.
- Unilinks cost less than triangle/choker combinations.
- Large crane hook opening speeds rigging.
- Web-Trap™ feature keeps web aligned on hardware.
- Functions both as a triangle and a choker, allowing you to choke from either end.
- Unilink has the same rated capacities as TT or TC slings.



Unilink Hardware Specifications						
Web Width (in.)	Dimensions (in.)				Weight (in.)	WLL (lbs.)
	L	D	H	T		
2	3.69	2.0	0.69	0.56	1.1	4,000
3	5.06	3.0	0.88	0.63	2.4	6,000
4	6.19	4.0	1.00	0.75	4.0	8,000

Avoid contact of hardware with load edges.

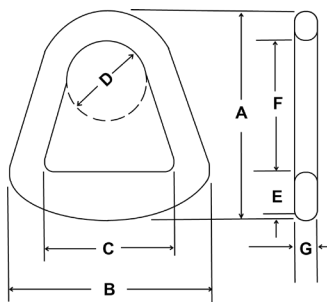
Forged Aluminum Triangles and Chokers

Aluminum is severely degraded by alkali, caustic environments, acids and salt water.

Aluminum triangles and chokers are available but may only be used with single-ply web slings within the rated capabilities shown in the table. They should not be used with Dura-Web™ 2000 webbing.

Forged from aircraft aluminum, this tough alloy is stronger than mild steel. Aluminum has the advantages of being lightweight, non-sparking and does not rust.

Note: Aluminum triangles and chokers **DO NOT** offer the advantages of the Web-Trap feature. Aluminum fittings are not as durable and cost more than steel.



Forged Aluminum Triangles									
Part Number	Dimensions (in.)							Approx. Wt. (lbs.)	WLL
	A	B	C	D	E	F	G		
2ALT1	4.0	3.625	2.25	1.75	0.9375	2.375	0.5625	0.31	3360
3ALT1	5.25	5.0	3.25	2.0	1.1875	3.3125	0.625	0.75	5000
4ALT1	6.25	6.625	4.375	2.375	1.4375	4.0	0.6875	1.1	6700
6ALT1	8.3125	8.875	6.375	3.125	1.75	5.50	0.9375	2.7	9700

Forged Aluminum Chokers									
Part Number	Dimensions (in.)							Approx. Wt. (lbs.)	WLL
	A	B	C	D	E	F	G		
2ALC1	6.125	5.25	2.125	1.75	0.9375	2.375	0.5625	0.73	3360
3ALC1	7.5	7.125	3.125	2.0	1.125	3.3125	0.625	1.3	5000
4ALC1	8.75	8.75	4.125	2.375	1.4375	4.0	0.6875	1.9	6700
6ALC1	11.3125	11.75	6.125	3.125	1.75	5.50	0.9375	5.1	9700

