

WEAR PADS

The Importance of Wear Protection

Wear Protection products like wear pads extend the life of slings by reducing exposure to abrasion and other similar forms of damage. Wear pads also help protect load surfaces from damage along points of contact, particularly when used with steel slings. **Always inspect slings by following the safety bulletin provided with each sling.**

Features and Benefits

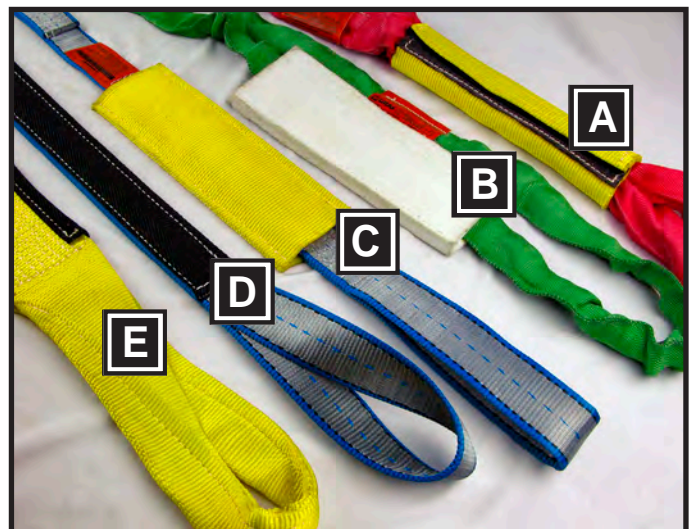
Sling and Load Damage Protection: Wear Protection can help to protect both the sling and the load from wear damage.

Construction Materials: A variety of padding materials are available to best suit the needs of each application.

Ease of Attachment: Some styles use hook and loop fastening to allow quick attachment and to help keep the position on the sling.

Ease of Sling Inspection: Length selection and other pad options are available that allow easy access to slings for frequent inspections.

Available Sizes: Available in a variety of lengths and widths.



- A: Tubular Quick Sleeve - *Webmaster*® 1600
- B: Flat Quick Sleeve - Pukka Pad Material
- C: Flat Sewn Sleeve - *Webmaster*® 1600
- D: Sewn-On Wear Pad - Texturized Buffer
- E: Edge Guard - Texturized Buffer



Full Body Wrap



Flat Quick Sleeve



PVC Pad



Flat Sewn Sleeve



Tubular Quick Sleeve

- General Information
- Web Slings
- Round Slings
- Sling Protection
- Wire Rope
- Chain Slings
- Rigging Hardware
- Mesh Slings
- Load Huggers
- Tow Products
- Lift-All Hoists
- Hoist Rings
- Plate Clamps
- Lifting Devices

WEAR PAD STYLES

SLEEVE TYPE

Preferred for slings that are used in a variety of lifting situations. Easily repositioned along sling body to accommodate loads of various sizes. Sleeve allows sling to adjust to lift without movement against load edge.

Tubular Quick Sleeve	Use with: <i>Tuflex</i> ® Roundslings Chain & Wire Rope Available Materials: All (except PVC)	High strength hook & loop sleeve for secure positioning. Tubular design gives maximum usable surface and maximum pad life.
Flat Quick Sleeve	Use with: All Slings Available Materials: All (except PVC)	Hook & loop sleeve allow easy installation and removal. Friction keeps sleeve in place when rigging.
Flat Sewn Sleeve	Use with: All Slings Available materials: All (except PVC)	Preferred for long-term use on single sling. May be repositioned as needed along sling length. May require factory installation for slings with hardware and single leg <i>Tuflex</i> .
Poly Pads	Use with: Web Slings Available Materials: PVC	Slides easily along sling length for convenient sling protection. Must be installed at factory for web slings with hardware.

SEWN-ON TYPE

For use on web slings where repetitive lifting situations expose the sling to damage. Eliminates the need to position pad before each lift.

Sewn-On Wear Pad	Use with: Web slings only Available Materials: All except ballistic nylon	For sling protection at expected wear points. Can be sewn anywhere on the sling, be any length and be on one or both sides.
Edge Guard	Use with: Web slings only Available Materials: Texturized nylon Light leather	Helps protect both edges of the sling. Placement on the sling per customer requirement.

WEAR PAD MATERIALS

		
Pukka-Pads (P) 0.3125" Thick A high-density polyester felt.	Webmaster® 1600 (D/N) 0.1875" Thick Polyester or Nylon	Heavy Leather (HL) 0.15625" Thick Genuine top-grain cowhide. May require multiple pieces.
		
PVC Belting (PVC) 0.125" Thick Non-absorbent conveyor type belting.	Texturized Buffer (TN) 0.09375" Thick A bulked fiber is used to produce a thin webbing with good abrasion resistance.	Ballistic Nylon (BN) 0.0625" Thick A 2-ply wear resistant fabric made of bulked nylon fiber, appropriate for wider sleeves.

WEAR PROTECTION

FLAT QUICK SLEEVES



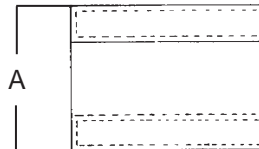
Flat Quick Sleeve Widths & Appropriate Sling Sizes

Part Number	Sleeve Width ¹ (in.)	Web Sling Width ² (in.)	Tuflex®				Keyflex™		Wire Rope Sling Dia. (in.)	Chain Sling Size (in.)
			Single Leg EN	Double Leg EE	6-Part Braid B6E	8-Part Braid B8E	Single Leg EN	Double Leg EE		
3FQS	3	1	–	–	–	–	10K	–	1/4 – 7/16	–
4FQS	4	2	30 – 60	30	–	–	15K – 20K	–	1/2 – 3/4	7/32 – 9/32
5FQS	5	3	90 – 150	60	–	–	25K – 30K	10K	7/8 – 1-1/8	3/8
6FQS	6	4	180 – 240	90 – 120	30	–	40K – 80K	15K – 20K	1-1/4 – 1-1/2	1/2
8FQS	8	6	360	150 – 240	60	30	90K – 125K	25K – 30K	1-3/4 – 2-1/4	5/8
10FQS	10	8	600 – 800	360	90 – 120	60 – 90	150K – 175K	40K – 80K	2-1/2	3/4 – 7/8
12FQS	12	10	1000	600	150 – 180	120 – 150	200K	90K – 125K	–	1

¹ Width of sleeve depends on the material being used. This chart is based on using Pukka Pad material.

² 1-ply or 2-ply only. For 3-ply or 4-ply, go to the next larger sleeve.

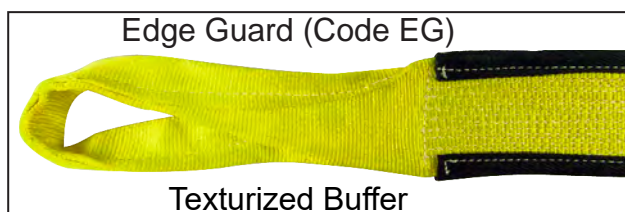
TUBULAR QUICK SLEEVES



Tubular Quick Sleeve Widths & Appropriate Sling Sizes

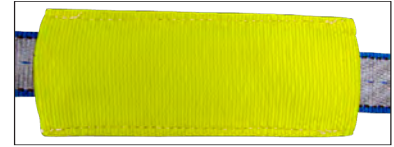
Part Number	Open Sleeve Width ¹ (A) (in.)	Tuflex				Keyflex		Wire Rope Sling Dia. (in.)	Chain Sling Size (in.)
		Single Leg EN	Double Leg EE	6-Part Braid B6E	8-Part Braid B8E	Single Leg EN	Double Leg EE		
4TQS	4	–	–	–	–	–	–	1/4	–
5TQS	5	–	–	–	–	–	–	5/16 – 1/2	–
6TQS	6	30 – 60	–	–	–	10K	–	9/16 – 7/8	7/32
8TQS	8	90 – 150	30 – 60	–	–	15K – 30K	–	1 – 1-1/2	9/32 – 3/8
10TQS	10	180 – 240	90 – 120	30 – 60	30	40K – 50K	10K – 15K	1-3/4 – 2	1/2 – 5/8
12TQS	12	360	150 – 180	90	60	60K – 80K	20K – 30K	2-1/2	3/4
14TQS	14	600 – 800	240	–	90	90K – 125K	40K – 50K	–	7/8 – 1
16TQS	16	1000	360	120 – 150	120	150K – 175K	60K – 80K	–	1-1/4
18TQS	18	–	600	180 – 240	150 – 180	200K	90K – 100K	–	–
20TQS	20	–	800	–	–	–	125K	–	–
22TQS	22	–	1000	360	240	–	150K – 175K	–	–
24TQS	24	–	–	–	–	–	200K	–	–
26TQS	26	–	–	600	360	–	–	–	–
30TQS	30	–	–	800	600	–	–	–	–
34TQS	34	–	–	1000	800	–	–	–	–

¹ Tubular Pukka Pads not available under 10" open sleeve width.



WEAR PROTECTION

STANDARD SEWN SLEEVES



Sewn Sleeve Widths & Appropriate Sling Sizes

Part Number	Sleeve Width ¹ (in.)	Web Sling Width ² (in.)	Tuflex [®]				Keyflex™ / DynaFlex™		Wire Rope Sling Dia (in.)	Chain Sling Size (in.)
			Single Leg EN	Double Leg EE	6-Part Braid B6E	8-Part Braid B8E	Single Leg	Double Leg		
3SS	3	1	30 – 60	–	–	–	–	–	1/4 – 3/4	7/32
4SS	4	2	90 – 150	30 – 60	–	–	10 – 15K	–	7/8 – 1-1/8	9/32 – 3/8
5SS	5	3	180 – 240	90 – 120	30	–	20 – 30K	–	1-1/4 – 1-1/2	1/2
6SS	6	4	360	150 – 180	60	30	40 – 80K	10 – 15K	1-3/4	5/8
8SS	8	6	600 – 800	240 – 360	90 – 120	60	90 – 100K	20 – 40K	2 – 2-1/2	3/4 – 7/8
10SS	10	8	1000	600	150 – 180	90 – 150	125 – 175K	50 – 80K	–	1
12SS	12	10	–	800 – 1000	240	180	200K	90 – 125K	–	1-1/4

¹ Width of sleeve depends on the material being used. This chart is based on using Pukka Pad material.

² Chart is for 1-ply or 2-ply slings. For 3-ply or 4-ply slings, use the next larger sleeve.

POLY PADS

Easily movable poly pads are made of tough, woven polyester fabric impregnated and coated with PVC. Easy to position on both web slings and tiedowns. Poly pads are designed to give protection when lifting around load edges or abrasive loads.

Part Number	Poly Pad	Web Width (in.)
60115	3-1/2 X 12	1 – 2
60116	6 X 12	3 – 4



How To Order

1. Choose code for width and style

- TQS Tubular Quick Sleeve
- FQS Flat Quick Sleeve
- SS Flat Sewn Sleeve
- WP Sewn-On Wear Pad
- EG Edge Guard
- Poly Pad (Use Part No. above)

2. Choose a Material

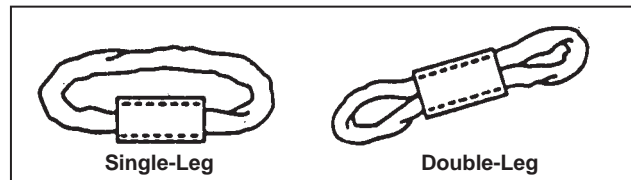
- P 5/16" Heavy Duty Pukka-Pad
- N Webmaster[®] 1600 Nylon
- HL Heavy Leather
- TN Texturized Buffer
- BN Ballistic Nylon (Tubular only)
- PVC (Sewn-on Wear Pads only)

3. Length of Sleeve

(If sewn-on pad, describe position on sling)
 Feet

4. For Use On

- Web Sling (Code or Width)
- Tuflex Single-Leg (Code)
- Double-Leg (Code)



- Chain Sling Size inches
- Wire Rope Sling Dia. inches

WARNING

Wear pads may not prevent cutting or other sling damage. To avoid severe personal injury or death, keep all personnel clear of loads about to be lifted, and suspended loads.